

# MathQuizzer

Version 2.02  
Feb 11, 2008

## Getting Mathquizzer:

MathQuizzer can be downloaded from [www.mathquizzer.ca](http://www.mathquizzer.ca) as a single 1.4MB file.

Save that file to a folder on your computer (a good location would be  
“<C:\Program Files\MathQuizzer\MathQuizzer.exe>” )

If you would like to create a shortcut on your desktop, it is as easy as right-clicking with the mouse on the downloaded file, and select “Send To” then “Desktop (create shortcut)”

Now you are ready to start using MathQuizzer.

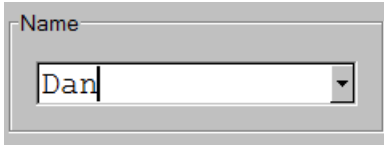
## Quick-Start to MathQuizzer:

This section is a quick start to get you using MathQuizzer immediately. If you wish more details on all the options, and settings, you can read the sections following the Quick-Start.

Double-click on this icon to start MathQuizzer.

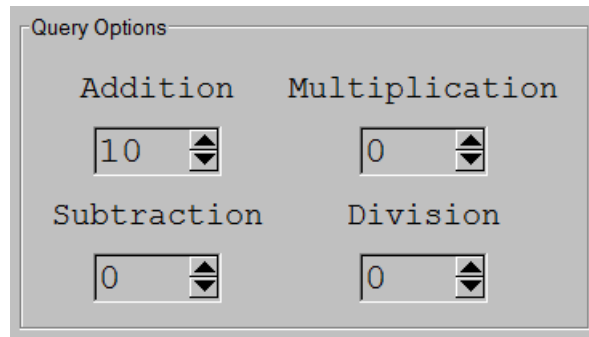


Type your name into the Name field. MathQuizzer will remember the names of those people who have used the program previously, so you may see other names in the dropdown list.



A screenshot of a software interface showing a text input field labeled "Name". The field contains the text "Dan". To the right of the text is a small downward-pointing arrow, indicating a dropdown menu. The entire field is enclosed in a light gray border.

Select the level of math equations that you would like to do in the Query Options box. For instance, I have selected addition questions up to 10. This will query me to questions as high as 10+10.

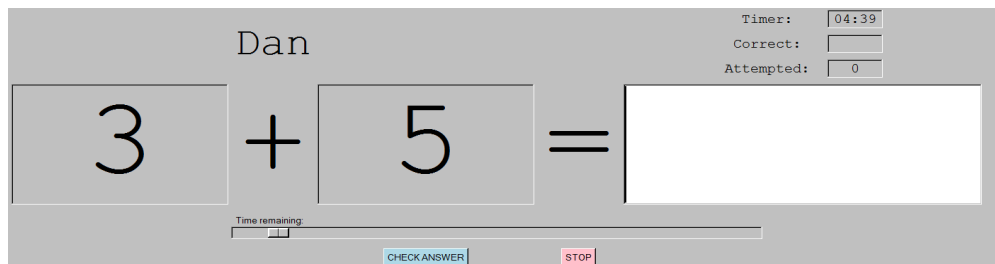


The 'Query Options' dialog box contains four spinners for selecting math operations and their levels. The 'Addition' spinner is set to 10, 'Multiplication' is set to 0, 'Subtraction' is set to 0, and 'Division' is set to 0.

Operation	Level
Addition	10
Multiplication	0
Subtraction	0
Division	0

You are now ready to press the **START** button to begin.

The Query Window will now appear:

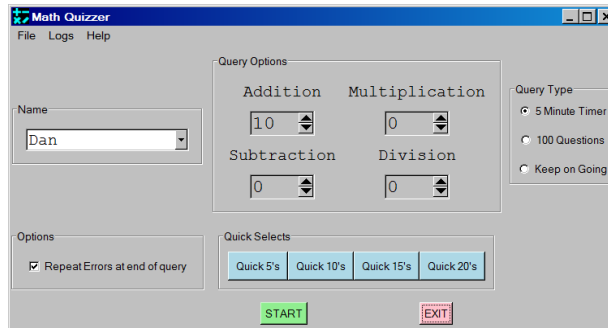


The Query Window displays the name 'Dan' at the top. On the right, there is a 'Timer' set to 04:39, 'Correct' and 'Attempted' counters both at 0. The main area shows a math problem:  $3 + 5 =$  followed by a large empty input box. At the bottom, there is a 'Time remaining' progress bar and two buttons: 'CHECK ANSWER' and 'STOP'.

As you can see, the first question is 3+5. Answer the questions, and at the end of the 5 minute Query, your results will be displayed and recorded. (tip: use the enter key after typing the answer. You can do this much faster than using the mouse to click on the Check Answer button).

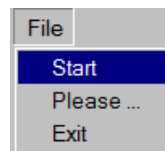
## Detailed View of MathQuizzer :

This is a picture of the main screen of MathQuizzer:



Let's start with the menus.

The **File** menu has three options:



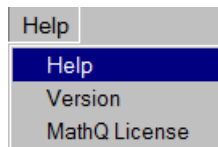
**Start** – allows you to start your MathQuizzer query.

**Please** – requests you to send a postcard to me if you enjoy this program.

**Exit** – well, that allows you to exit, if you really don't want to do any more math today.

The **Logs** menu button displays the log files. The logs keep track of your errors and final totals. More on that later.

The **Help** menu also has three sub menu options:



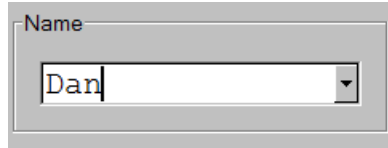
The first, **Help** – suggests you go to [www.mathquizzer.ca](http://www.mathquizzer.ca) for assistance. That would be to get this file, which explains everything you should need to know on how to use this program.

The second, **Version** – identifies the version number and date of creation of this program.

The third, “**MathQ License**” - lists the copyright information and tells you the allowable uses of this program. Essentially you can do anything you wish with it. If your friends want a copy, you may share. If you have more than one computer, you can also install it on each one of them.

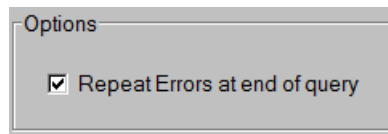
**Main Screen:**

The first section you might notice is the **Name** box:

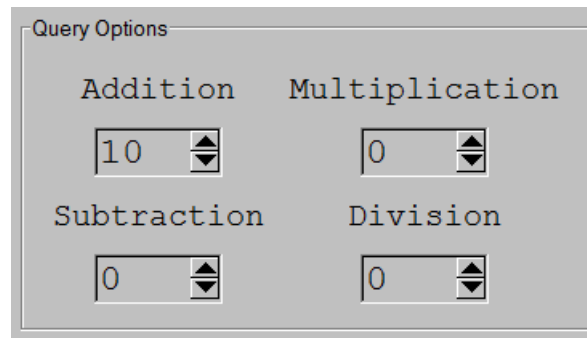
A rectangular box with a light gray background and a thin border. At the top left, the word "Name" is written in a small, dark font. Below it is a text input field containing the text "Dan". To the right of the input field is a small downward-pointing arrow icon, indicating a dropdown menu.

The reason for this box is to identify you as the user, as opposed to someone else. This is a good option for families with multiple children, or in a school or library setting. Of course, MathQuizzer cannot verify that you are who you say you are, so it is possible to put another name there. In fact you could use a different name each time you use it.

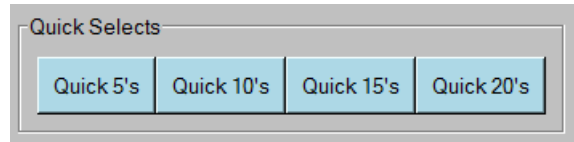
Directly below the Name box, is another box called **Options**. There is currently only a single option which if selected, allows you to repeat your errors at the end of the Query. This is an excellent way to improve your math abilities as you practice those errors.

A rectangular box with a light gray background and a thin border. At the top left, the word "Options" is written in a small, dark font. Below it is a single checkbox with a checkmark inside, followed by the text "Repeat Errors at end of query".

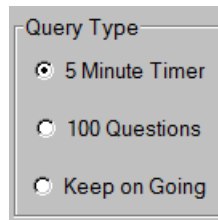
The **Query Options** box allows you to select which level of questions you would like. Just click on the arrows to increase or decrease the numbers in the boxes. "0" means it will not ask you those types of questions. You can select multiple types, such as Addition up to 10's and Subtraction up to 5's in the same Query.

A rectangular box with a light gray background and a thin border. At the top left, the text "Query Options" is written in a small, dark font. Below it are four spinners arranged in a 2x2 grid. The top-left spinner is labeled "Addition" and has the number "10" in its box. The top-right spinner is labeled "Multiplication" and has the number "0" in its box. The bottom-left spinner is labeled "Subtraction" and has the number "0" in its box. The bottom-right spinner is labeled "Division" and has the number "0" in its box. Each spinner has small upward and downward arrows on its right side.

The **Quick Selects** box allows you to quickly select a skill level for all 4 of the operators (addition, subtraction, multiplication, and division). It will change the numbers in the Query Options box to display the levels selected.



The **Query Type** box provides the most exciting options in this program.



The first option is “**5 Minute Timer**”. This runs a 5 minute countdown. At the end of the 5 minutes, your totals will be displayed, and you can then repeat the errors that you made.

The second option is “**100 Questions**”. This is for those who are faster at doing math. If your goal is to answer twenty questions every minute, then in 5 minutes you will get 100 questions. When you are faster, you can answer the 100 Questions in less than 5 minutes and you can be done sooner. MathQuizzer still tracks your totals, and gives you a speed ratio at the end. Of course you can still repeat your errors.

For someone who is just learning, or a skilled mathematicians who want to do math until they drop from exhaustion, the last option “**Keep on Going**” is the appropriate choice. This option will start the Query, and will keep going until you click on the stop button.

The **START** button will start the Query, and the **EXIT** button will exit the program.

## The Query Screen:

The Query screen has been designed to be plain so as to cause less distraction to the student.

The screenshot shows the MathQuizzer interface. At the top left, the name "Dan" is displayed. In the top right corner, there are three input fields: "Timer:" with the value "04:39", "Correct:" which is empty, and "Attempted:" with the value "0". The main area of the screen displays a math equation: "3 + 5 = [ ]". The numbers "3" and "5" are in large boxes, and the "+" and "=" signs are also large. Below the equation is a horizontal scroll bar labeled "Time remaining:" with a small slider. At the bottom center, there are two buttons: a blue "CHECK ANSWER" button and a red "STOP" button.

Your name is displayed in case during the effort of answering questions you forget who you are. The equation is displayed in large numerals. Otherwise, it would be hard to figure out the answer if the equation wasn't displayed.

When you have selected multiple operators such as Addition and Subtraction, the plus sign shown above will change as the equations change. Numbers and operators are selected randomly based on the Query Options you chose.

The white box is where you need to type your answer. It only allows numerals, so don't try to answer the question above by typing "e.i.g.h.t".

In the top corner of the screen, you can see the **Timer**. It will count down from five minutes if you are doing a 5 minute time trial. If you selected "100 Questions", the timer will count up, to record how long your query has taken.

The **Correct** box will display the number of equations you have answered correctly. The **Attempted** box displays the number of equations that you have attempted to answer. If you feel like doing some more math, you can subtract the number of correct from the number attempted to calculate how many errors you have made.

The scroll bar near the bottom of the screen is a quick visual indicator of how much time or how many questions you have remaining depending on which type of Query you are running.

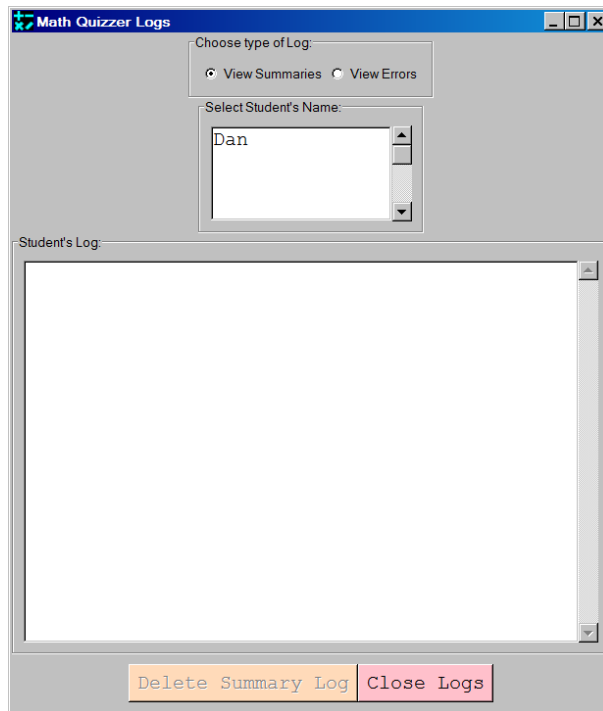
The **Check Answer** button is available for those who like to use a mouse. However, you will be much quicker using MathQuizzer if you just press the Enter/Return key on your keyboard after you have answered each question, rather than moving your hand to the mouse, and clicking the button.

The **Stop** button allows you to stop a Query in process. Your totals will still be displayed and recorded, but if you have to go to the bathroom ....

**Logs:**

There are two types of logs – Summary and Errors. You select which ones you wish to see in the “Choose Type of Log” box.

The Select Student's Name box displays a list of those students that have been using MathQuizzer. Just click on the name of the one for whom you wish to display the results.



If you wish to delete the students name and the results, select the student's name, and click on the “Delete ..” button at the bottom. To close the Logs, click on the “Close Logs” button.

**Final Tips:**

Use the Enter/Return key on the keyboard after you answer each questions rather than clicking on the Check Answer button.

Use the number keypad on right side of the keyboard. It is much quicker to select the numbers there, than along the top of the keyboard.

Practice. The more use use MathQuizzer the faster you will get at answer the questions. A goal of 20 questions per minute is reasonable. The faster you get at basic math equations, the easier it will be to do more complicated math.

**Enjoy!**